

*New!*

# ELEVATOR CONTROLLER

# URC-2008



The URC-2008 Elevator Controller allows control of up to two elevator cabs with 8 floors total. Can be expanded to control up to 32 floors. It utilizes flash firmware for easy upgrades, and employs fully distributed intelligence for off-line operations. Decisions such as access level changes, schedule activation and card expiration are made by the URC-2008 controller without the need of a computer.

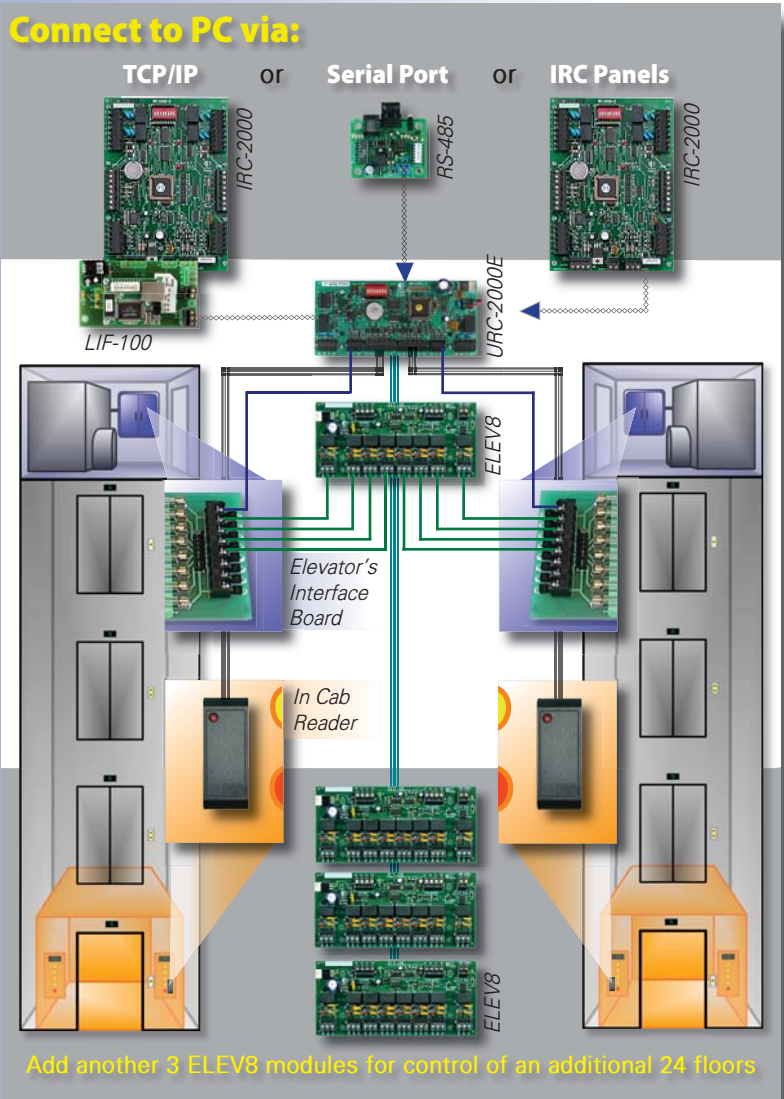
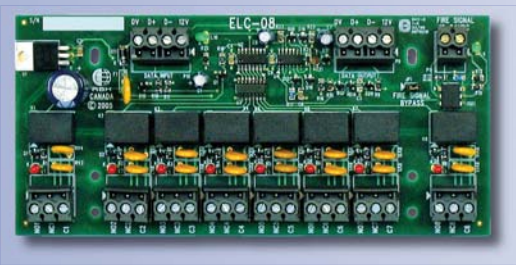
The panel contains on-board clock and memory backup as well as thermal overload protection. URC-2008 supports fully supervised communication via RS-485 and TCP/IP with selectable communication speed up to 56.6Kbps.

Connect to the Integra32 Server PC via IRC-2000 controllers or directly via a RS232/485 convertor, for a total of up to 16 panels per controller network.

## 8 Floor Elevator Control Kits

- Small footprint
- Simple to install
- Optimal capacity
- Distributed architecture
- Flash Firmware updates
- Built-in clock and calendar
- Expandable to 32 floors
- **LOW COST!**

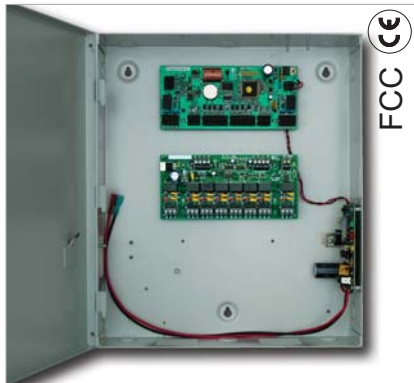
## ELEV8 Relay Output Module



www.rbh-access.com

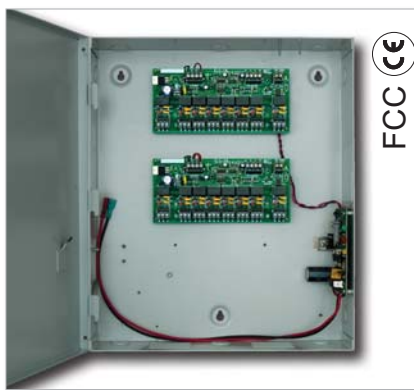
# URC-2008

# Specifications



FCC CE

URC-2008 includes one URC-2000E controller and one ELEV8 module installed in an ENCL-1-PS enclosure as shown above

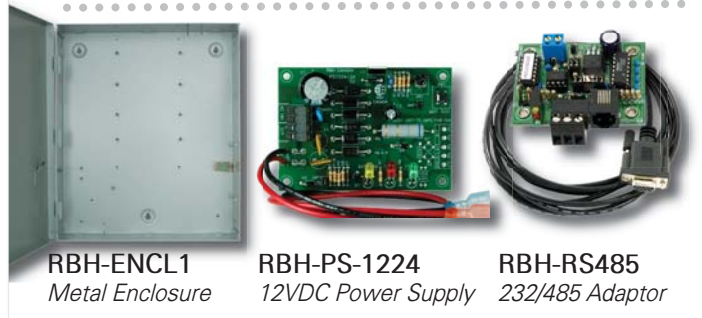


FCC CE

Two ELEV8 modules shown installed in an ENCL-1-PS enclosure.

Panels per Network :	16
Local PC & Remote Communications :	TCP/IP Ethernet or RS485, supervised
Communication Between Controllers :	Supervised RS-485
Speed :	Programmable 9.6 - 56Kbps
Distance :	4,000ft (1,200m)
Cable Type :	18AWG, 2 conductor, twisted, stranded, shielded
Cards per Panel :	3,000 (up to ten digit card numbers)
Access Levels per Panel :	3,000 (one per card per panel)
Site Codes per Panel :	10 (site code programming is not mandatory)
Off line Transactions Buffer :	3,000 FIFO, command, and alarm priority
Access Points (Readers/Keypads) :	2 with LED and Buzzer control
Distance :	Max 500ft (150m)
Cable Type :	20 - 22AWG, 6 or 8 conductor, stranded, shielded
Simultaneous Card Formats per Panel :	5, All Wiegand compatible readers supported
Programmable Supervised Inputs :	4
Input Supervision :	Four state monitoring (1 or 2 resistors)
Distance :	Max 1,000ft (300m)
Cable Type :	20 - 22AWG, 2 conductor
Programmable Outputs :	2 SPDT 2A @ 30VDC, dry contacts 2 Electronic drivers, 12VDC max, 100mA
Output mode :	Programmable Fail Safe/Fail Secure
Power Requirements :	16.5VAC, 40VA transformer (not included)
Recommended Back-up Battery :	12V, 7AH lead acid or gel cell (not included)
Max ELEV8 modules per URC-2000E :	4
ELEV8 Interconnect :	4 Conductor, 18 AWG Shielded
ELEV8 Elevator Control Outputs :	8 SPDT 2A @ 30VDC, dry contacts LED status display for each output
ELEV8 Fire alarm Input :	12VDC

## Compatible Accessories



URC-2000E Universal Controller is designed for mounting in the standard ENCL-1 enclosure. Available only as a part of URC-2008.



ELEV8 Relay Output Module is designed for mounting in the standard ENCL-1 enclosure. Available individually or as a part of URC-2008.



## Americas

RBH Access Technologies, Inc.  
2 Automatic Drive, Suite 108  
Brampton, ON Canada  
L6S 6K8

Tel. +1-905-790-1515  
Fax. +1-905-790-3680  
info@rbh-access.com  
www.rbh-access.com

## Europe

ARAS & RBH Security Group Ltd.  
F3 Enterprise Way, Vale Business Park  
Evesham, Worcestershire UK  
WR11 6GS

Tel. +44(0)-1386-425810  
Fax. +44(0)-1386-425810  
info@aras-rbh.com  
www.aras-rbh.com

## Distributed by:

